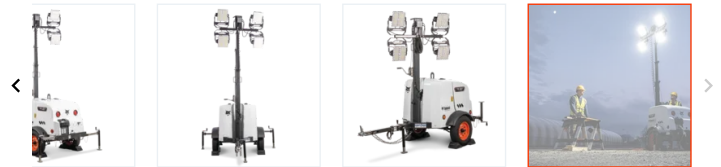
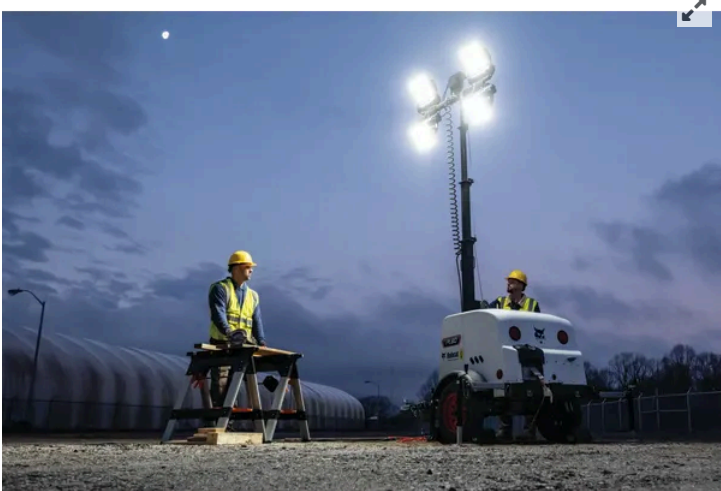


[Home](#) ▶ [Equipment](#) ▶ [Portable Power](#) ▶ [Light Towers](#) ▶ [PL80](#)

PL80

Light Tower



The Bobcat® PL80 portable light tower provides long runtimes and even longer maintenance intervals for easy, hassle-free operation.

- One of the most compact light towers available
- Optional LED lamps extend runtime with a 50,000-hour lifespan
- Composite clamshell gives you easy access to all service components
- Ideal for construction, disaster relief, parking lots and special events

Contact Dealer for Pricing

[Find a Dealer](#)

[View Current Offers](#)

[Request a Demo](#)

[Download Brochure](#)

PL80 Overview

From illuminating construction sites for 24-hour productivity to bringing much-needed light to assist with emergency disaster relief operations, count on the Bobcat PL80 portable light tower and its impressive 180-hour run time.

The PL80 is a programmable light tower that can be set to turn on at dusk and turn off at dawn for uninterrupted productivity. The mast rotates a full 360 degrees and extends up to 23 feet high for broad coverage, while each of the lights can be pointed independently. When it comes time to reposition, the PL80 is compact and light enough to be maneuvered by hand.

The Bobcat PL80 vertical mast light tower features a compact footprint for increased jobsite mobility and cost-effective transport – you can fit 17 on a single flatbed truck. It’s powered by a reliable Kubota® engine paired with a high-output 8-kilowatt alternator, giving you both light and power at the same time.

Like all Bobcat products, the PL80 was engineered for maximum productivity, ease of use and low lifetime cost of operation. The innovative clamshell-style canopy is made of a durable, lightweight composite material that lifts easily for quick access to all service points. The Kubota engine has one of the longest maintenance intervals on the market, capable of running for 1,000 hours in between oil changes, reducing downtime and maintenance costs.

If your workday doesn't end, or your event heats up after the sun goes down, trust the Bobcat PL80 to provide safe working conditions with zero interruptions.

PL80 Specs & Compare

| ▲ PL80 Key Specifications |
|------------------------------------|
| PL80 |
| Runtime with 4 Metal Halide Lights |
| 97 h |
| Runtime with 4 LED Lights |
| 180 h |
| Prime Power Rating |

| |
|---|
| 8 kW |
| ⌵ Electrical System |
| PL80 |
| System Voltage |
| 12 v |
| ⌵ Engine |
| PL80 |
| Engine Make |
| Kubota |
| Displacement |
| 68.53 in³ |
| Emissions Tier Level |
| Tier 4 Final |
| Cooling System |
| Water / Glycol |
| Fuel Type |
| #2 Ultra-Low Sulfur Diesel |
| Usable Fuel Capacity |
| 52.4 gal |
| Runtime with 4 Metal Halide Lights |
| 97 h |
| Runtime with 4 LED Lights |
| 180 h |
| ⌵ Performance |
| PL80 |
| Operating Weight |
| 1,793 lb |
| Rated Speed |
| 15.4 (11.1) @ 1800 |
| ⌵ Dimensions |
| PL80 |
| Length with Drawbar Down |
| 109 in |
| Length with Drawbar Up |
| 82 in |
| Width |
| 55 in |
| Width without Outriggers Deployed |
| 82 in |
| Track Width |
| 47.4 in |
| Height with Tower in Transport Position |
| 8.5 ft |
| Height with Tower Deployed |
| 23 ft |
| ⌵ Generator |
| PL80 |
| Prime Power Rating |
| 8 kW |
| Available Frequency |
| 60 Hz |

| Receptacles |
|-------------------------------|
| PL80 |
| 120V GFCI Duplex (NEMA 5-20R) |
| (2) Standard |

Related Models



PG25

Prime Output: 25 kVA (20 kW)

Power Output @ 1800RPM (hp)

PG40

Prime Output: 40 kVA (32 kW)

Power Output @ 1800RPM (hp)

PG50

Prime Output: 50 kVA (40 kW)

Power Output @ 1800RPM (hp)



[View All Light Towers >](#)



WARNING: This product can expose you to chemicals including engine exhaust (including diesel engine exhaust when equipped), lead and lead compounds, mineral oils, soots, phthalates, and carbon monoxide which are known to the State of California to cause cancer and birth defects or other reproductive harm. For more information go to www.P65Warnings.ca.gov.

Certain specification(s) are based on engineering calculations and are not actual measurements. Specification(s) are provided for comparison purposes only and are subject to change without notice. Specification(s) for your individual equipment will vary based on normal variations in design, manufacturing, operating conditions, and other factors.

REGION SELECTOR

NORTH AMERICA (EN)

BUYING TOOLS

BUILD & QUOTE

SEARCH INVENTORY

FIND A DEALER

SPECIAL OFFERS

REQUEST A DEMO

CONTACT A DEALER

BUYING RESOURCES

CONTACT US

CUSTOMER SERVICE

WEBSITE FEEDBACK

DEALER OPPORTUNITIES

GOVERNMENT SALES

FREQUENTLY ASKED QUESTIONS

EMAIL SIGN-UP

COMPANY

ABOUT US

INNOVATION

COMMUNITY

PEOPLE

BOBCAT STORIES

AMBASSADORS

LEGAL

PRIVACY POLICY

TERMS & CONDITIONS

RECALLS

One Tough Animal



