
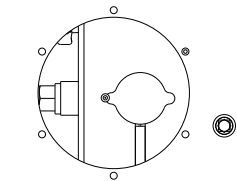


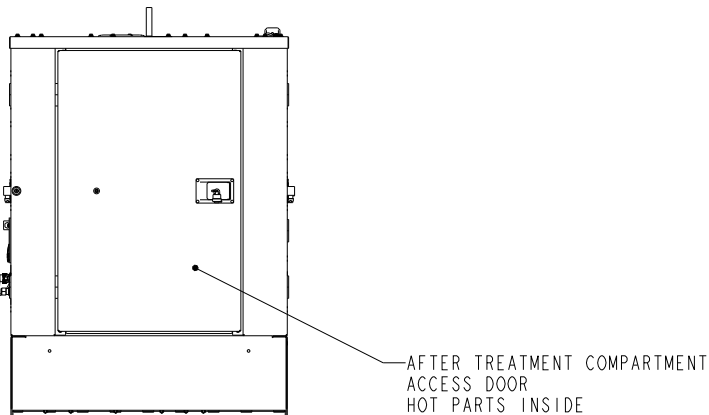
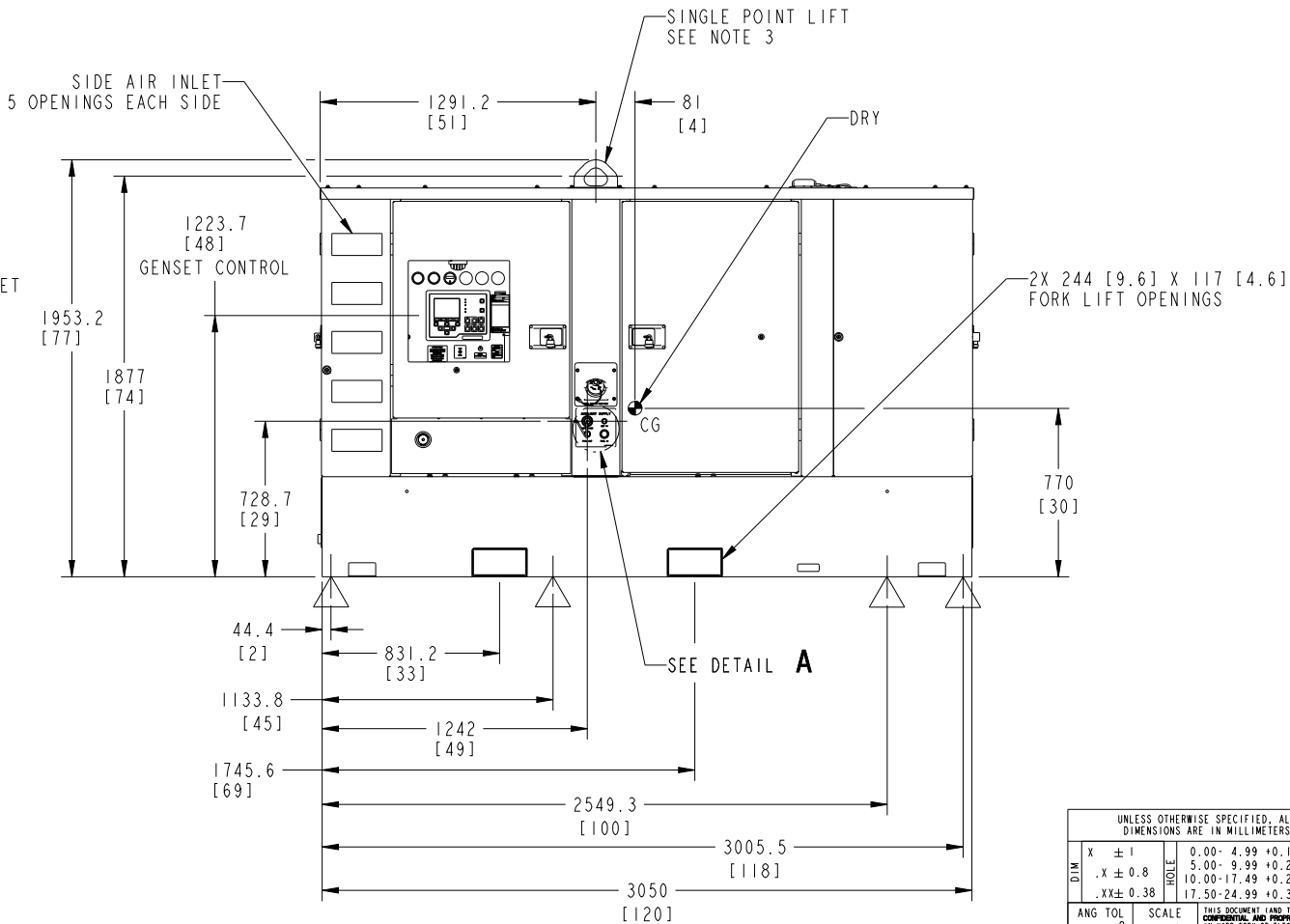
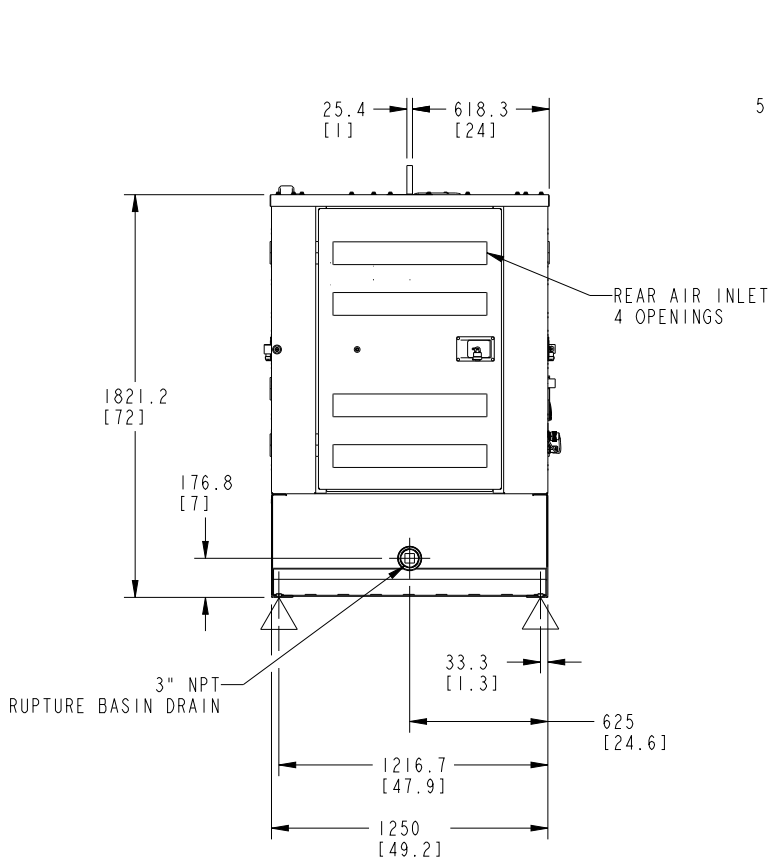
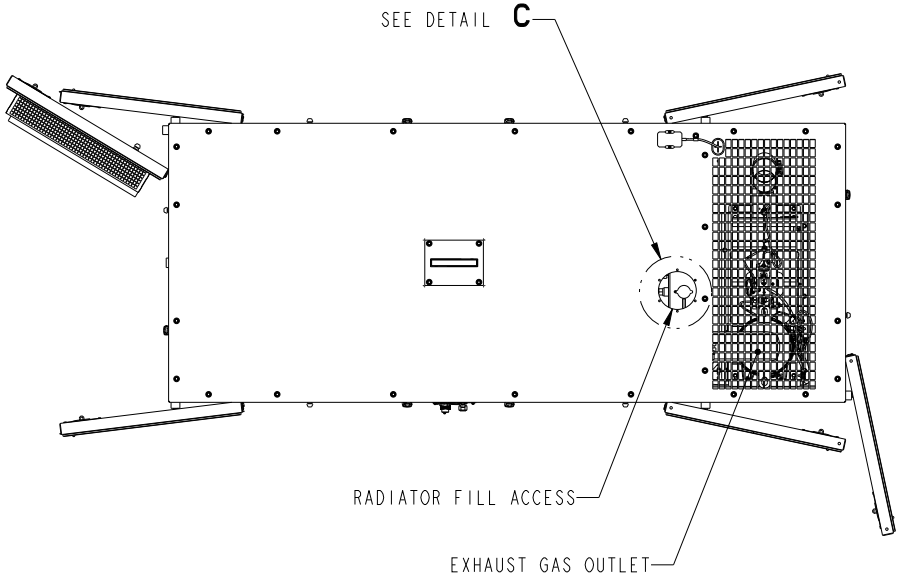
REL NO	REV	NO	REVISION	DWN	CKD	APVD	DATE
ECO-172785	B	1	UPDATE OUTLINE ADD C70 GENSET	MBI	MJK	A.TERRAZAS	10OCT17
		2	NOTE 4 WAS "FLUID CAPACITIES... (14 GALLONS)"	MBI	MJK	A.TERRAZAS	10OCT17
		3	UPDATE TABLE ADD "C70" TO GENSET MASS	MBI	MJK	A.TERRAZAS	10OCT17
		4	MADE DETAIL A PHANTOM LINES & MVD TO SHT 2	MBI	MJK	A.TERRAZAS	10OCT17
		5	SEE SHEET 2	MBI	MJK	A.TERRAZAS	10OCT17
		6	SEE SHEET 3	MBI	MJK	A.TERRAZAS	10OCT17
		7	SEE SHEET 4	MBI	MJK	A.TERRAZAS	10OCT17
		8	SEE SHEET 4	MBI	MJK	A.TERRAZAS	10OCT17

- NOTES:
- DIMENSIONS SHOWN IN [] ARE INCHES.
 - M16 X 2 THREADED HOLES MARKED BY  ARE PROVISIONS FOR SECURING TO A MOUNTING SURFACE.
 - SINGLE POINT LIFT WILL ACCOMMODATE A Ø76.2 [3] LIFTING DEVICE.
 - FLUID CAPACITIES:
ENGINE OIL: 10.97 LITERS (11.6 QUARTS)
COOLANT: 32 LITERS (8.5 GALLONS)
FUEL TANK: 534 LITERS (141 GALLONS)
 - EXHAUST OUTLET DIAMETER: 101.6 [4]


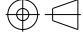
GENSET MASS		SKID MOUNTED	TRAILER MOUNTED	TONGUE WEIGHT
C100 & C70 FULL FEATURED	WITH FUEL	2976 KG [6560 LBS]	3674 KG [8100 LBS]	295 KG [650 LBS]
	WITHOUT FUEL	2522 KG [5560 LBS]	3221 KG [7100 LBS]	286 KG [630 LBS]

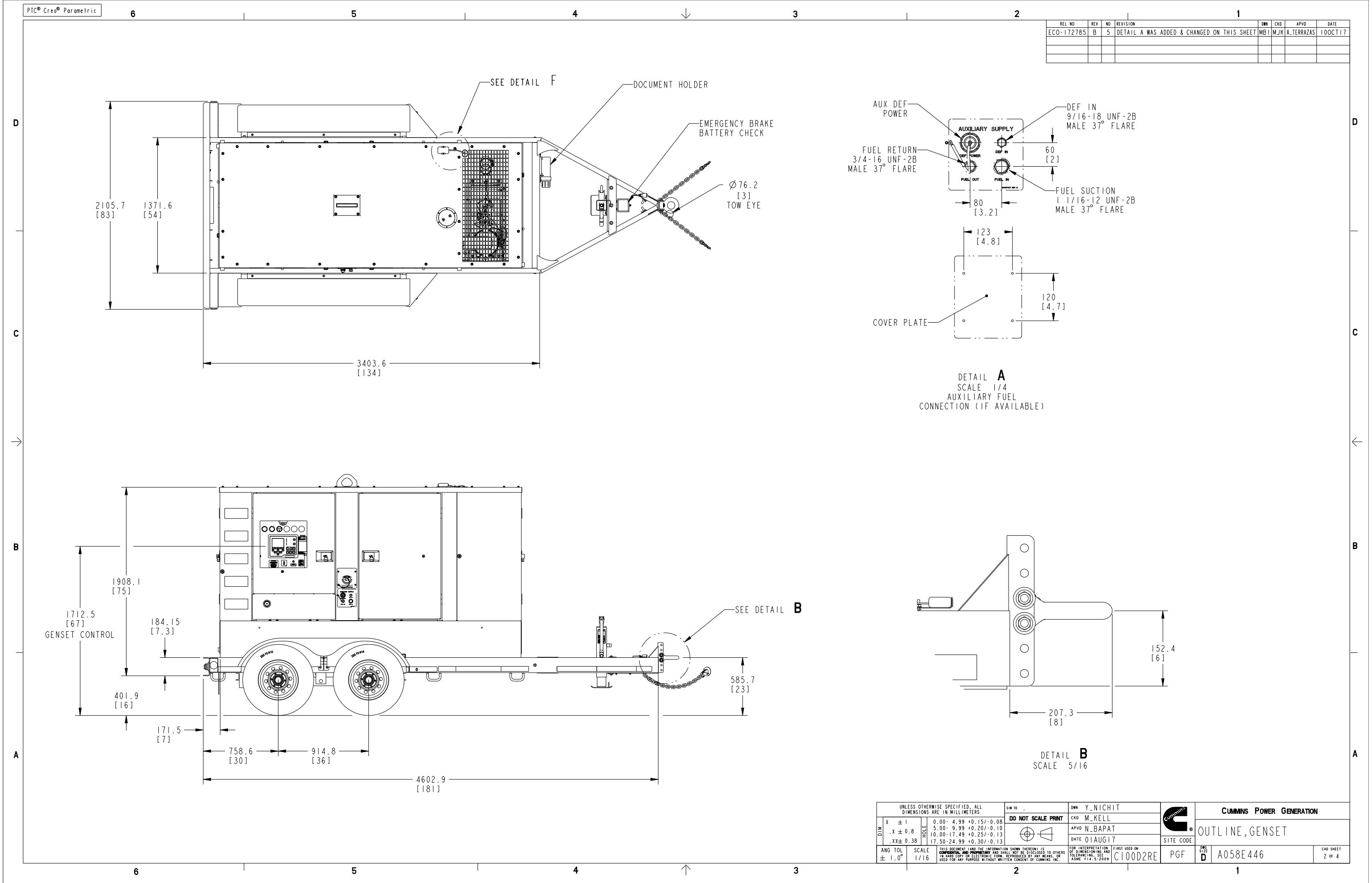


DETAIL C
SCALE 1/4
RADIATOR FILL ACCESS
COVER REMOVED

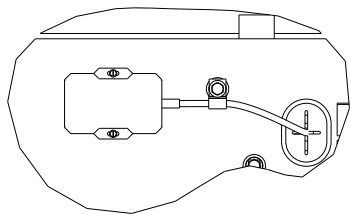


SKID MOUNTED GENSET (NO TRAILER)

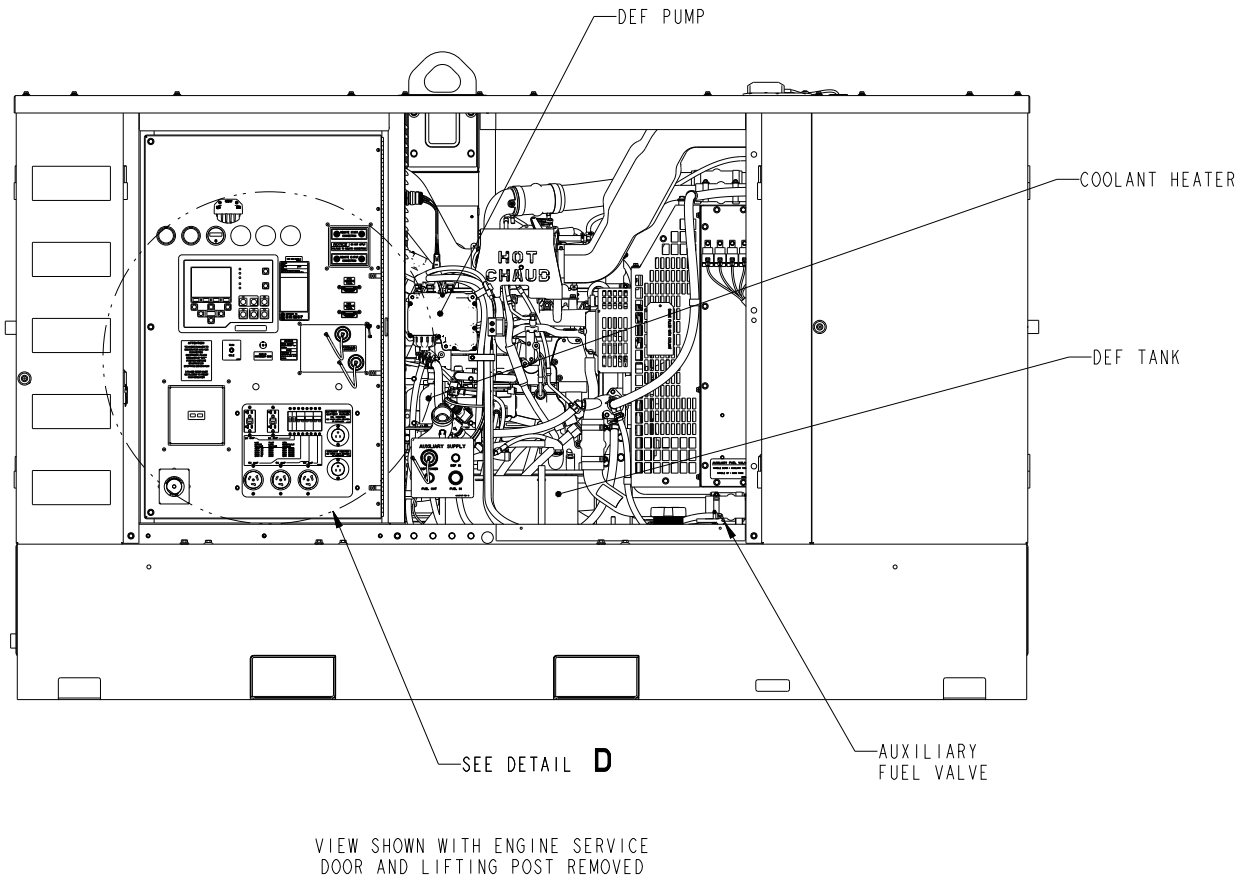
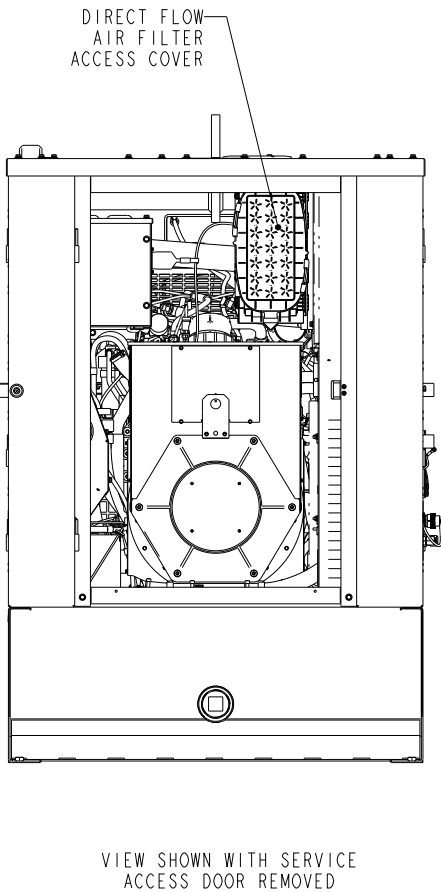
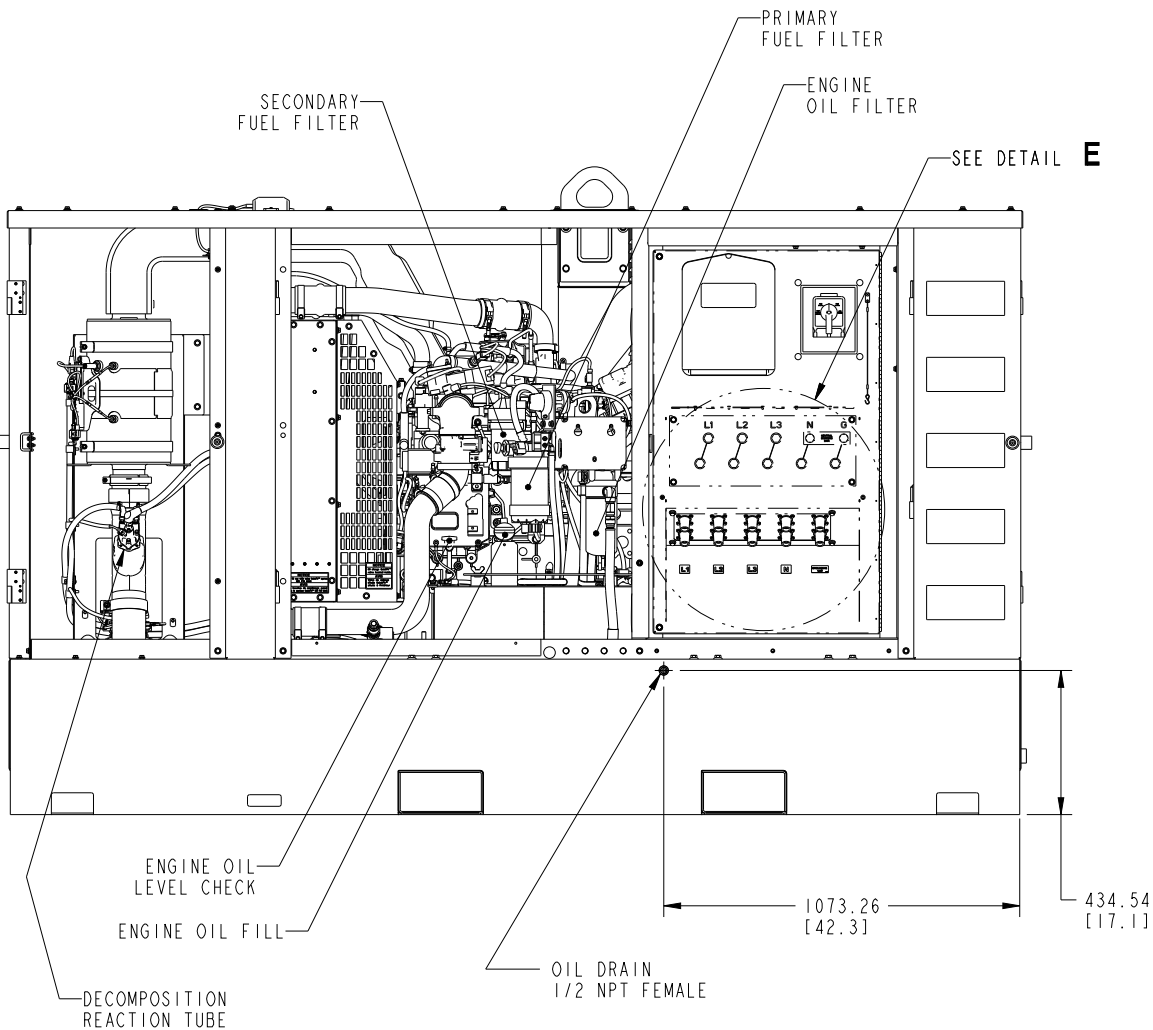
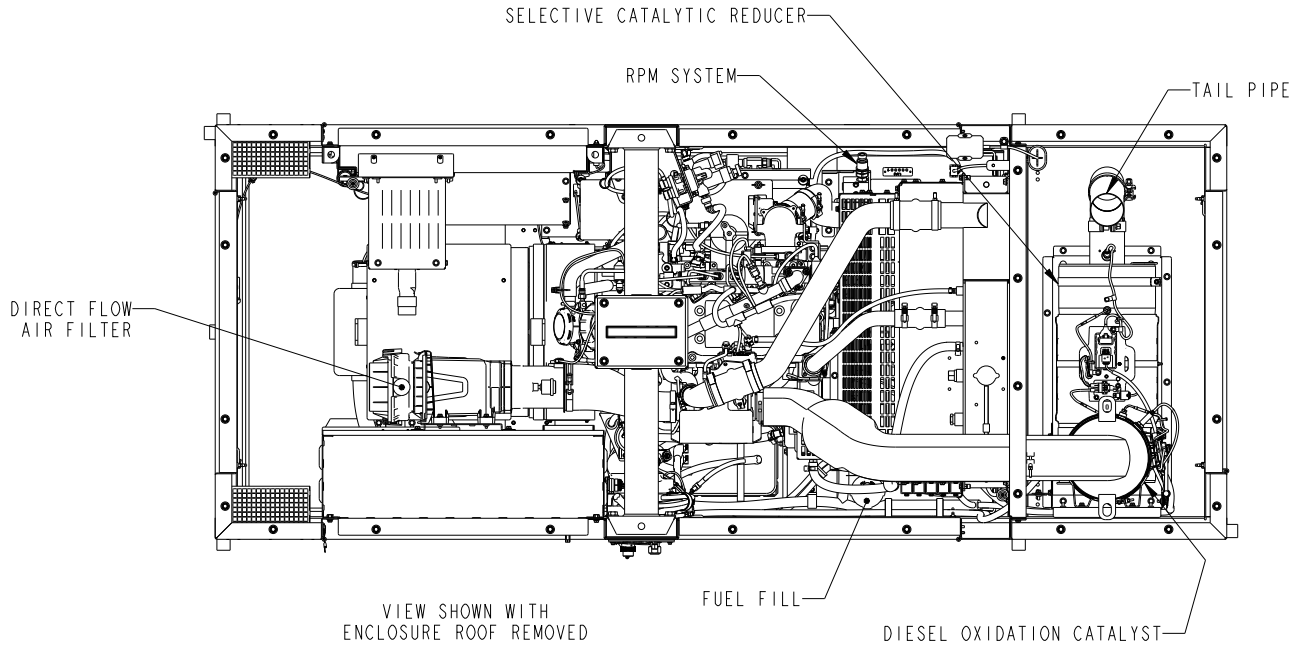
UNLESS OTHERWISE SPECIFIED, ALL DIMENSIONS ARE IN MILLIMETERS				SIM TO	DWN	Y_NICHIT		CUMMINS POWER GENERATION	
DO NOT SCALE PRINT					CKD	M_KELL		OUTLINE, GENSET	
X ± 1 ± 0.8 XX ± 0.38				0.00- 4.99 +0.15/-0.08 5.00- 9.99 +0.20/-0.10 10.00- 17.49 +0.25/-0.13 17.50- 24.99 +0.30/-0.13	APVD		N_BAPAT	SITE CODE	
ANG TOL ± 1.0°				SCALE 1/16		DATE 01AUG17		PGF	
THIS DOCUMENT (AND THE INFORMATION SHOWN THEREON) IS CONFIDENTIAL AND PROPRIETARY AND SHALL NOT BE DISCLOSED TO OTHERS IN HARD COPY OR ELECTRONIC FORM, REPRODUCED BY ANY MEANS, OR USED FOR ANY PURPOSE WITHOUT WRITTEN CONSENT OF CUMMINS INC.				FIRST USED ON C100D2RE		FOR INTERPRETATION OF DIMENSIONING AND TOLERANCING, SEE ASME Y14.5-2009		DWG. SIZE D	A058E446
									CAD SHEET 1 OF 4





PTC® Creo® Parametric			6	5	4	3	2	1		
REL NO	REV	NO	REVISION	DWN	CKD	APVD	DATE			
ECO-172785	B	6	MADE DETAIL E PHANTOM LINES, ADD DETAIL F	MBI	MJK	A.TERRAZAS	10OCT17			

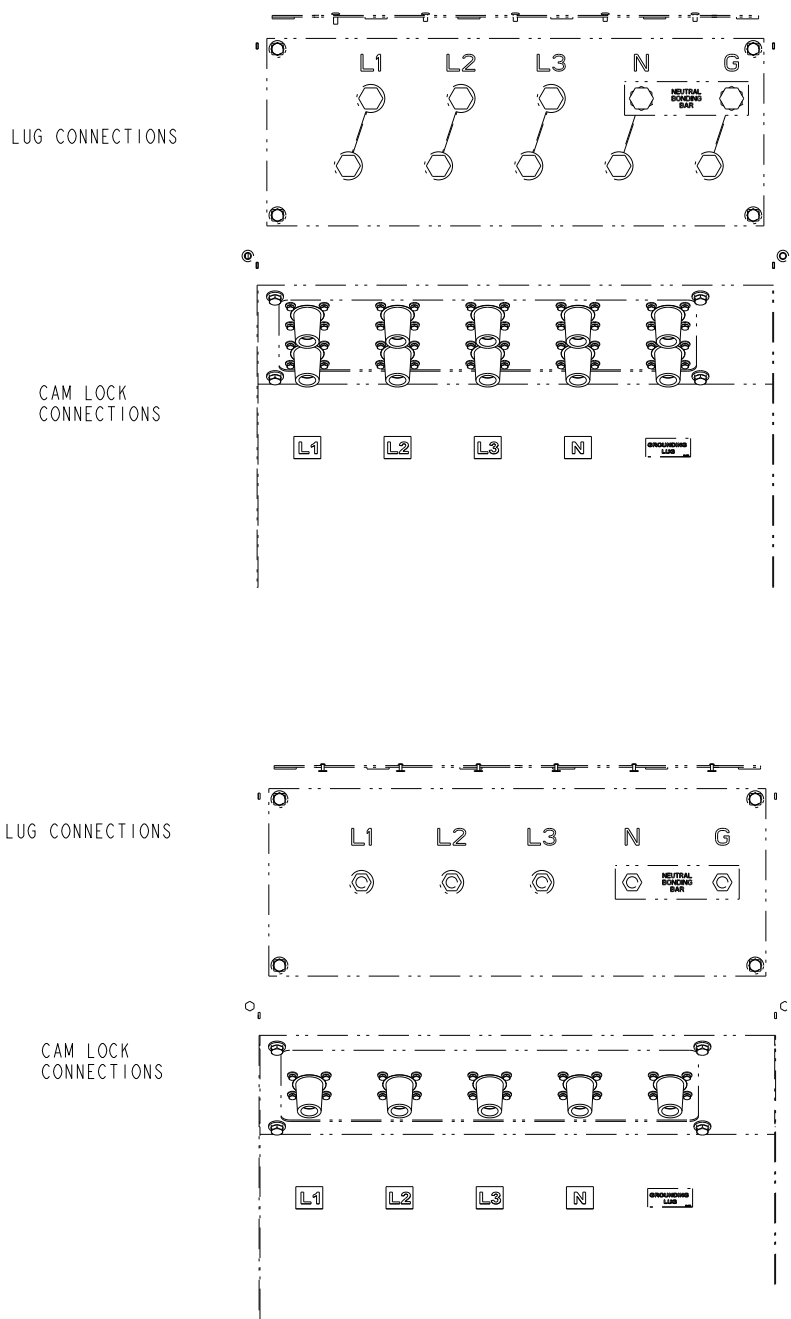


DETAIL F
SCALE 1/4
GPS FEATURE
(IF AVAILABLE)

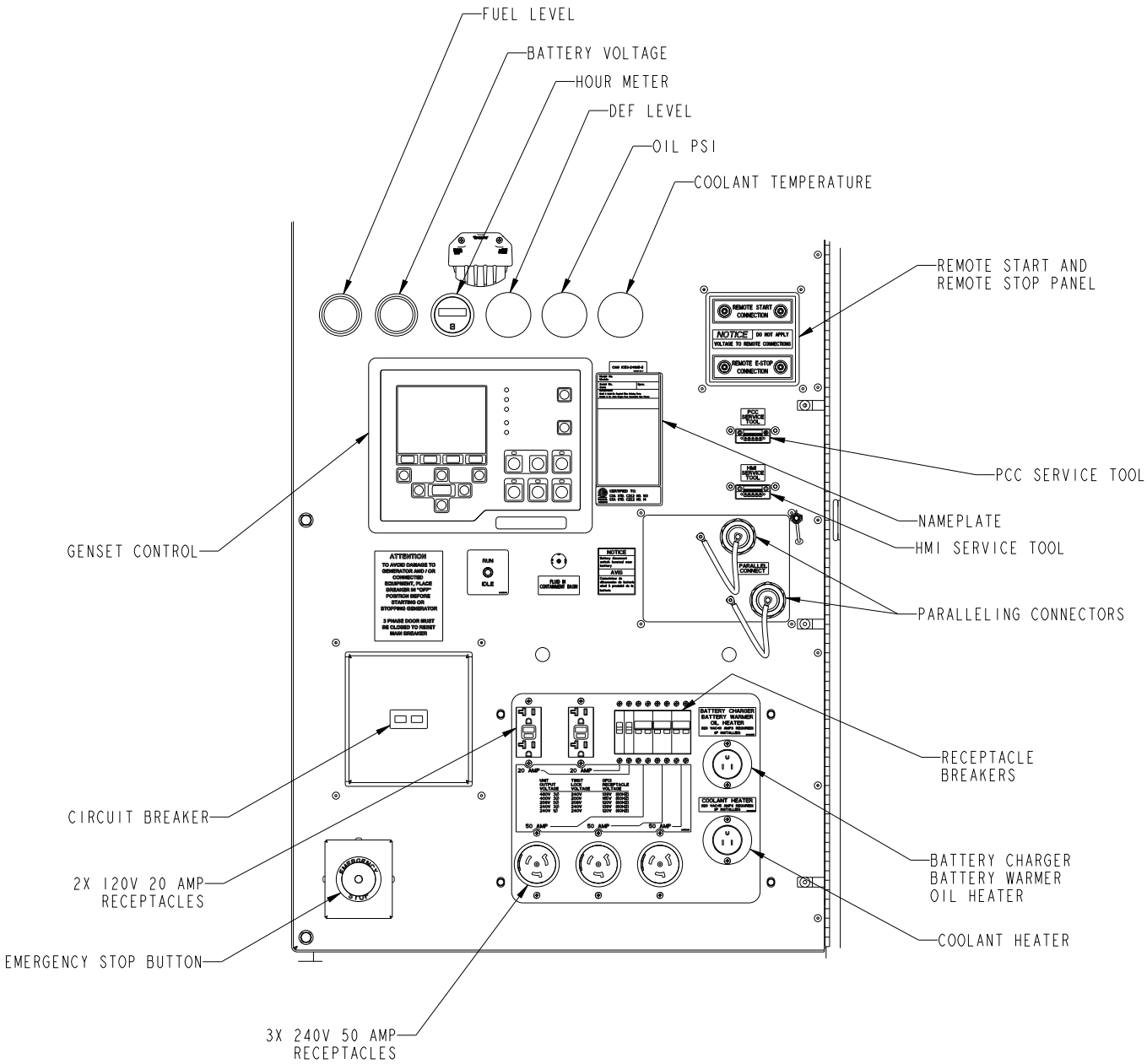


UNLESS OTHERWISE SPECIFIED, ALL DIMENSIONS ARE IN MILLIMETERS				SIM TO	DWN Y_NICHIT		CUMMINS POWER GENERATION		
DIM	X ± 1	0.00 - 4.99 +0.15/-0.08	DO NOT SCALE PRINT		CKD M_KELL		SITE CODE	OUTLINE, GENSET	
	.X ± 0.8	5.00 - 9.99 +0.20/-0.10			APVD N_BAPAT				
	.XX ± 0.38	10.00 - 17.49 +0.25/-0.13			DATE 01AUG17				
		17.50 - 24.99 +0.30/-0.13			FIRST USED ON C100D2RE				
ANG TOL SCALE		THIS DOCUMENT (AND THE INFORMATION SHOWN THEREON) IS CONFIDENTIAL AND PROPRIETARY AND SHALL NOT BE DISCLOSED TO OTHERS IN HARD COPY OR ELECTRONIC FORM, REPRODUCED BY ANY MEANS, OR USED FOR ANY PURPOSE WITHOUT WRITTEN CONSENT OF CUMMINS INC.				PGF	DWG. SIZE D	A058E446	CAD SHEET 3 OF 4
± 1.0° 1/16									

REL NO	REV	NO	REVISION	DWN	CKD	APVD	DATE
ECO-172785	B	7	CHANGE DETAIL E	MBI	MJK	A.TERRAZAS	10OCT17
		8	ADD ECM LABEL TO DETAIL D	MBI	MJK	A.TERRAZAS	10OCT17



DETAIL E
SCALE 1/4
DISTRIBUTION PANEL
LOAD TERMINAL
CONNECTIONS
(IF AVAILABLE)



DETAIL D
SCALE 1/4
USER INTERFACE

UNLESS OTHERWISE SPECIFIED, ALL DIMENSIONS ARE IN MILLIMETERS				SIM TO	DWN	CKD	APVD	SITE CODE	CUMMINS POWER GENERATION	
DO NOT SCALE PRINT					Y_NICHIT	M_KELL	N_BAPAT		OUTLINE, GENSET	
DATE 01AUG17									A058E446	
FIRST USED ON C100D2RE									4 of 4	